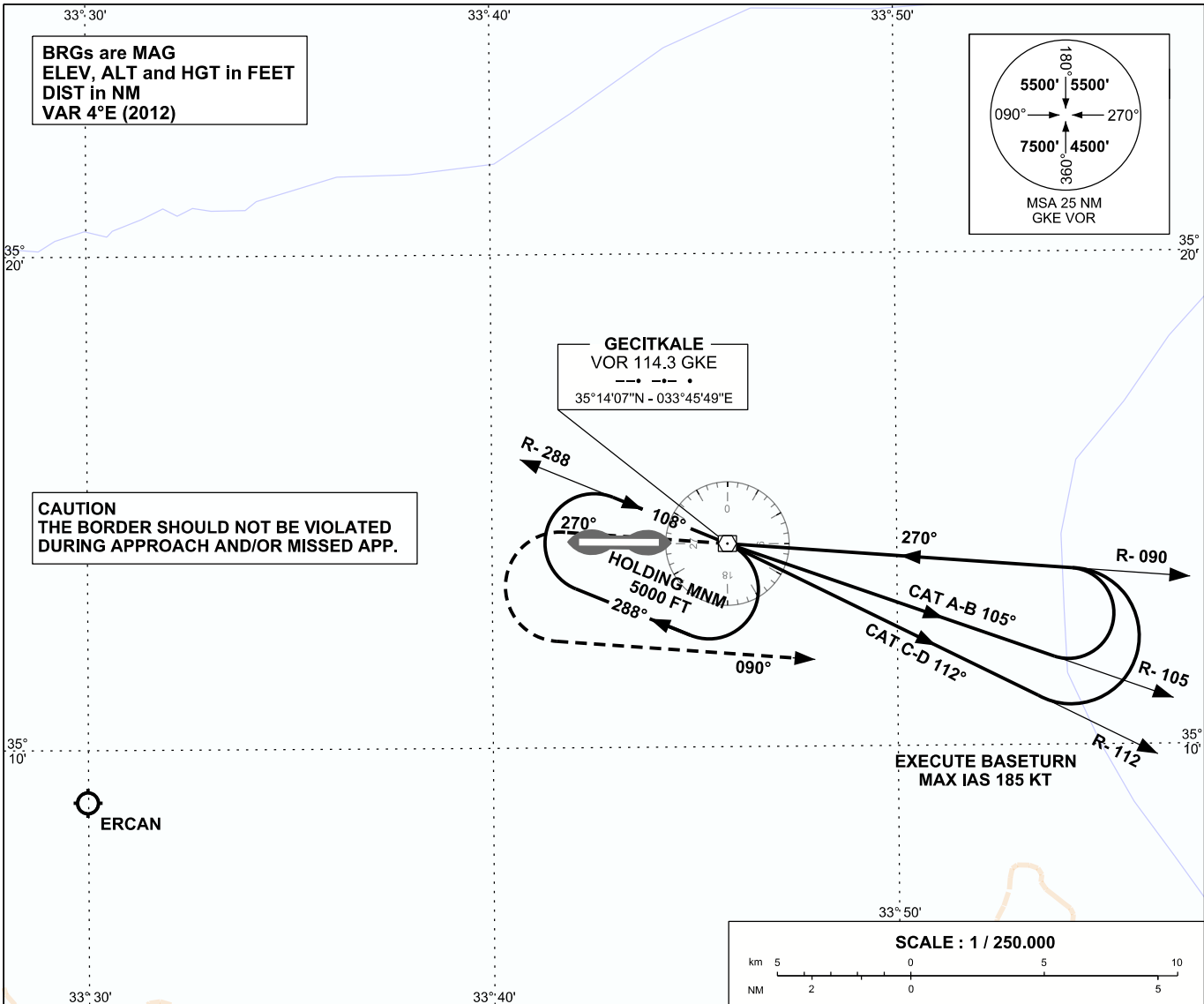


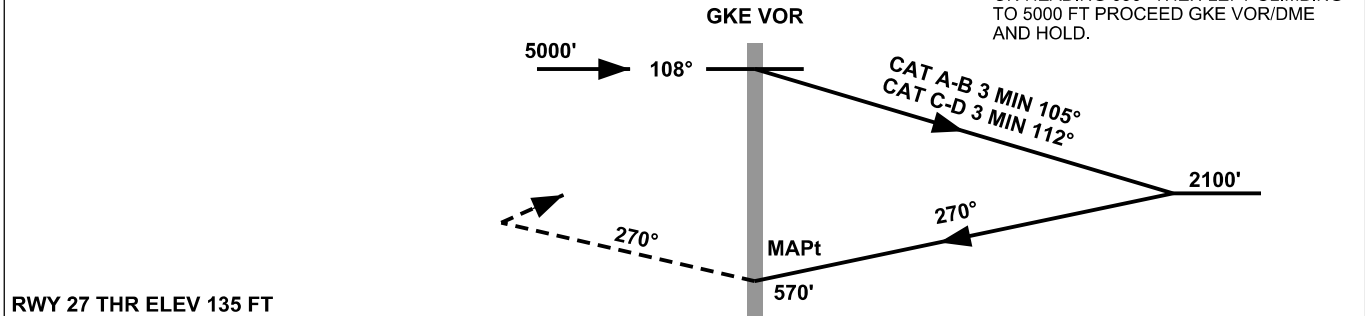
INSTRUMENT
APPROACH
CHART - ICAO

APP	127.750	AD ELEV	143 FT
TWR	120.375	TRANSITION ALTITUDE	6000 FT
ATIS	118.350		

GAZİMAGUSA/
GEÇİTKALE
VOR RWY 27



MISSED APPROACH
CLIMB TO 1000 FT ON HEADING
270° THEN LEFT CLIMBING TO 3500 FT
ON HEADING 090° THEN LEFT CLIMBING
TO 5000 FT PROCEED GKE VOR/DME
AND HOLD.



NM to/from THR RWY 27																																
OCA (H)		A		B		C		D																								
Straight-in Approach		570' (435')																														
Circling		800' (657')						1120' (977')																								